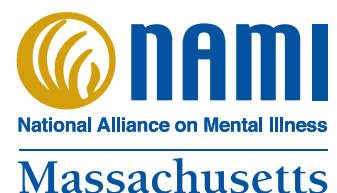




EDUCATE

ADVOCATE

SUPPORT



ANNUAL REPORT **2016**

FOLLOWERS BY THE NUMBERS



TWITTER
15,954



FACEBOOK
3,171



LINKED IN
739

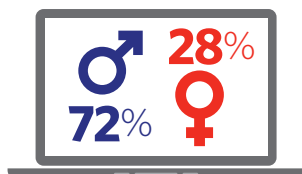


INSTAGRAM
211



WEBSITE SESSIONS

143,407



WEBSITE USERS BY AGE GROUP

35-44 19%	25-34 23%	18-24 18%
45-54 20%	55-64 18%	65+ 7%



NAMI Mass Board members at the 2016 Walk

FROM LEFT TO RIGHT BACKGROUND: Ewa Pytowska, Deb Pacheco, Tom Scurfield, Jane Martin, Mathieu Bermingham, Constantine Souris, Michael Fetcho, Kathleen Considine, Steve Rosenfeld and Howard Trachtman.

MISSING FROM PHOTO: Robert Antonioni, Craig Davis, Bernice Drumheller, Kitty Dukakis, Mel Greenberg, Roy Lynch, Mary Jean Guidette and Ed Manzi, Jr.

NAMI Massachusetts Board of Directors

Steve Rosenfeld, President

Mathieu Bermingham, Vice President

Robert Antonioni, Treasurer

Jane Martin, Secretary

Kathlenn Considine
Craig Davis
Bernice Drumheller
Kitty Dukakis
Michael Fetcho

Mel Greenberg
Mary Jean Guidette
Roy Lynch
Ed Manzi, Jr.

Debra Pacheco
Ewa Pytowska
Tom Scurfield
Constantine Souris
Howard Trachtman

THE NAMI MISSION

Our Mission: Improving the quality of life for people with mental illness and their families.

Our Vision: We seek to extend the education, support, and advocacy programs of NAMI Mass so that we will reach out to all Massachusetts peers and their families; improve the public's awareness and understanding of mental illnesses; and advocate at all levels to ensure that all people affected by mental illnesses receive, in a timely fashion, the services that they need and deserve.

Our Values: Central to NAMI Massachusetts is a commitment to programs that are both peer-driven and family-driven; to the key concepts of recovery, resiliency, and support that are essential to wellness and quality of life; and to full and meaningful lives for all people.

A Huge NAMI Mass Thank You to Steve Rosenfeld

In October 2016, we say goodbye to Steve Rosenfeld as our Board President who expertly served in this capacity for the last three years. We are indebted to Steve for his service and we are lucky that he will remain on the Board and has taken the time to groom his successor, Tom Scurfield.

His Board Presidency saw many positive, innovative changes at NAMI Mass. He oversaw a board that diversified its membership, participated in more fundraising events, and adopted a new Strategic Plan to reflect the many changes that have occurred on his watch and the progress we wish to make in the next five years. We applaud Steve for his many achievements as Board President. Some of his accomplishments are:

- Steve introduced our Spring Fundraiser which always features a special guest such as Senator Elizabeth Warren or actress Glenn Close and has been very successful. Typically, we raise over \$80,000 which has allowed us to expand our programs.
- Steve initiated a Major Gift drive of \$10,000 or more that also has significantly helped our coffers.
- Steve was instrumental in launching CEOs Against Stigma, (see page 9), our campaign to educate businesses from the top down about depression and anxiety being the leading causes of disability in the workplace, as well as single-handedly writing the first edition of *Bad for Business: The Business Case for Overcoming Mental Illness Stigma in the Workplace* that is given to every CEO and their Human Resources Director.
- Steve played a pivotal role in the formation of NAMI Boston and was its first President.
- Steve also played a major role in the overhaul of our resource helpline, called the COMPASS (see page 10). We now have a full time Director of the NAMI Mass COMPASS and a half time assistant. We use Salesforce customized for the helpline that contains information on housing, employment, substance use, insurance, et al. with new information regularly posted. Steve suggested forming an advisory board and now sits on this board. His commitment and loyalty to NAMI Mass is exemplified by his eagerness to be trained as a COMPASS Navigator — one of the volunteers who answer the COMPASS phone lines.
- Under Steve's watch, NAMI Mass has brought on new programs like *Peer-to-Peer* which has taken off like a rocket and hired a Diversity and Inclusion Director to help our 21 local chapters attract people of color to our education programs and support groups as well as to encourage diverse communities to get mental health treatment.
- Perhaps most importantly, Steve was at the forefront of our development of the Criminal Justice Diversion Project, CJDP, (see page 6) including being Chair of the Advisory Board. Without his stewardship, NAMI Mass probably would not have the project today. You can see the change this program has accomplished in Police Departments in Cambridge, Brookline and Somerville, to name a few, and the extended training that new cadets receive on mental illness. NAMI Mass now has two staff working on our CJDP with a third person to be hired this fall.

His many years of board experience and fundraising, and superior knowledge of the mental health field, healthcare in the Commonwealth, and nonprofits in general has touched and educated every staff and Board member. His kindness has affected us all and we have all learned life lessons from him.

With enormous gratitude and thanks, we wish Steve nothing but the best and look forward to our continued work together.



Laurie Martinelli
Executive Director



Karen Gromis
Deputy Director



S. Stephen Rosenfeld
NAMI Mass Board
President, 2013-2016

NAMI MASS
IS PROUD TO
DEDICATE OUR
2016 ANNUAL
REPORT TO
STEVE
ROSENFELD
FOR ALL THE
INCREDIBLE
WORK HE HAS
ACCOMPLISHED
ON OUR
BEHALF.

IN OUR Own Voice



IOOV Cambridge training

In Our Own Voice (IOOV) is one of NAMI's signature programs, in which two trained presenters share their personal stories of recovery—from the dark days to where they are today and everything in between. Developed in 1996, IOOV harnesses the expertise of people in recovery recognizing that when we share our wisdom with others, everyone is helped. Anti-stigma research has shown that the best way to destigmatize mental health conditions is through **direct contact with people who live with them**. In FY 2016 the program grew substantially, **we brought 309 *In Our Own Voice* presentations to 9,806 people across Massachusetts**. In FY 2015, we did 209 presentations and reached 5,010 people.

Highlights: We were part of three hospital Schwartz Rounds presentations; spoke to DMH Commissioner Joan Mikula and all area directors; did a presentation for correctional officers with Sheriff Bowler and Berkshire County Corrections; spoke at the Attorney General's office and at the Massachusetts State House, and an IOOV presentation officially became a curriculum requirement for all first-year students at Tufts Dental School.

Trainings: We held four presenter trainings this year (Boston 8/2015; Hyannis 3/2016; Northampton 4/2016 and Cambridge 6/2016) welcoming 43 new people to our team.

Breakdown of venues:

- Hospitals/residential units: 706 people *"I learned I am not alone."* Carney Hospital Attendee
- CIT trainings: 163 law enforcement personnel
- Faith Communities: 401 people *"To hear them speak, in their own voices lets me, as a family member, see that self-acceptance and freedom from stigma are possible."* Attendee First Parish Church
- Providers/human service agencies: 653
- Colleges/Universities: 2713 students *"Seeking help for a mental illness can be scary... I think the most important thing that these presentations provide is the sense of hope that having a mental illness is something you can overcome and defeat. ...it's a shame that mental illness is treated differently than any other disease or physical health issues such as cancer or breaking a leg."* Student from Tufts University
- High school students: 1911 students at nine different high schools *"Today I learned that I am not alone, and it feels a little hopeful."* Student at Newton South High School
- Teachers: 127
- CEOs Against Stigma: reached 1335 people at work. *"I felt at ease asking questions because the speakers were so open."* Attendee from Community Catalyst

Basics

We've found it hard over the last couple of years to maintain the momentum of previous years. We have now put *Basics* in the capable hands of Nancy Parker who directs the *Allies for Student Mental Health* (formerly Educating the Educators) program. We hope to offer *Basics* as a follow-up to *Allies for Student Mental*

Health to school systems to educate parents and caregivers of children and adolescents living with mental health issues. *Basics* classes were held in Acton, Gloucester and Springfield in 2016. Nancy has already partnered with two local service agencies in offering *Basics* to the people they serve.



FY 2016 P2P Classes

Acton	Hyannis
Boston	Lowell
Cambridge	Quincy
Gardner	Roxbury
Gloucester	Salem

Sharing the images with my loved ones helps them understand me more than they already do... One of the images I shared with my son made him cry — which he never does. So that's how powerful these images can be.

P2P Graduate

PEER2PEER

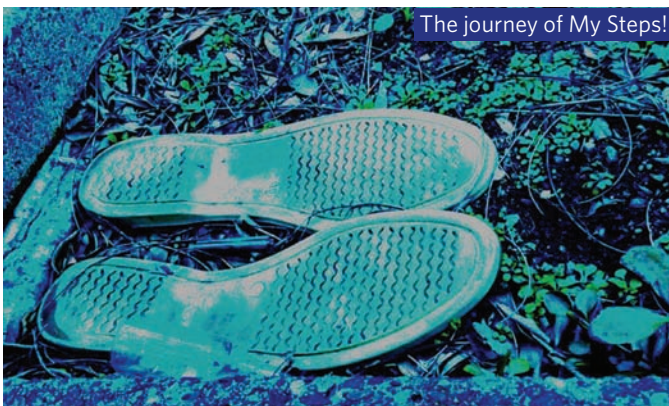
The Peer-to-Peer (P2P) program continues to grow and demand is exceeding supply. Every NAMI Mass Affiliate is eager to offer the program. As part of our goal to reach a wider audience, we held two classes at substance use recovery centers. Participants not only enjoyed the inspiration and hope that the program offers but were able to gain insight into how their substance use might have been a response to mental health challenges.

As each participant goes through the class, we see them learning the value of their experience, growing in confidence, making friends and creating a roadmap for their future that focuses on their growing ability to cope, make decisions and thrive in society.

Every class member now has the opportunity to create images and use them to express their hopes and dreams in a powerful way. The Expressive Digital Imaging (EDI), now an integral part of the Peer-to-Peer class, allows participants to give visual expression to their feelings and emotions.

Class members tell their stories to each other using words and the images they create. Some participants find that they can express in pictures what they find hard to share in words.

We had over 100 class participants in ten classes and we trained nine more mentors in Gardner, MA in June 2016.



Going in, I was uncertain if I could relate to a mental illness program but discovered new awareness about my mental health and substance use issues.

P2P Graduate

family2ylmst

I had learned *a lot before this class and was pleased to find that I could learn so much more about navigating the challenges associated with supporting and caring for my child. The facilitators for the class did a great job and their wealth of knowledge was invaluable. The biggest impact for me was meeting and learning from others who are struggling with similar situations. I felt much less alone.*

F2F Graduate

Fall Classes 2015

Barnstable
County (2)
Cambridge
Charlestown
Concord
Dartmouth
Gloucester
Jamaica Plain
Leominster
Lexington
Middletown
Northampton
Norwell
Quincy
Waltham
West Newton

Spring Classes 2016

Boxborough
Dorchester
Hingham
Hyannis
Lexington (2)
Marlborough
Martha's
Vineyard
Mashpee
Nantucket (2)
Orleans
Peabody
Pocasset
Waltham
Wellesley
Worcester

The FY16 *Family-to-Family* (F2F) program saw a record number of classes – thirty three. Sixteen classes were offered in fall 2015 and seventeen more in spring 2016.

Sixty-eight volunteer teachers from seventeen Affiliates put their hearts and souls into the program to bring it to families, partners, friends and significant others of adults living with mental illness. Close to five hundred people across the state were able to benefit from this NAMI signature evidence-based course with most leaving with words of high praise and gratitude for their teachers and the materials.

In April 2016, NAMI Mass organized a F2F Teacher training in Western Massachusetts. Fourteen new teachers from six Affiliates received their certifications and most of them are already teaching. This training opened an opportunity to offer the program in a Western Mass area previously not covered. A smaller eight-person F2F Teacher training was held in January 2016 on Nantucket and covered the regional needs of our NAMI Cape Cod & the Islands Affiliate. Three trainees from NAMI Latino and South Shore Affiliates joined the Nantucket training.

NAMI National welcomed two new F2F teacher trainers to our organization. Sharon deVos and Carolyn White from NAMI Cambridge-Middlesex volunteered to get trained at the NAMI national training in Washington, DC in April 2016.

Starting with fall 2015, NAMI Mass managed to move away from requesting the teachers to pick up participant manuals at the state office. Now all class materials are delivered directly to the teachers.

Connection

This year, we have been evaluating the strengths of our *Connection* groups. Facilitators have received in-person tips for running their groups and help with recruitment. We recently trained 12 facilitators. This is allowing us to expand the reach of our programs into new geographical areas and provide much needed help to facilitators who are going it alone.

Connection Recovery Support Groups, FY 2016

Acton	Brockton	Gardner	Marlborough
Agawam	Everett	Gloucester	Orleans
Amesbury	Fitchburg	Haverhill	Quincy
Boston (3)	Framingham	Lynn (2)	Somerville
			Taunton



Martin Luther King, Jr., **Celebration of Hope & Dreams**, Mental Health Conversations, Forums, etc. totaling 23 along with providing continuous support services to our signature programs and Compass Helpline, January 2016.

As advocates for people living with mental health conditions and their families, we are fully committed to ensuring the ability of all people to lead full and happy lives. Although one in five adults is living with mental illness today, 70% of those who receive services tend to drop out of treatment, according to a report, *Engagement* published by NAMI National in July 2016.

Nevertheless, we never give up! Instead, we've reached out to thousands of families and the people they love with mental health conditions to ensure access of quality services, care and coordination **impacting 6,832 people in FY2016**. This includes programs such as:

- *Sharing Hope* provides understanding of mental illness and stigma while building hope about recovery for African-Americans.

- Diversity Trainings raise sensitivity and awareness to implicit bias and microaggressions to increase team building.
- *Bridges of Hope* provides hope and understanding of mental illness for clergy, professionals and community members.
- *Compartiendo Esperanza* provides understanding of mental illness and stigma while building hope about recovery for people in the Latino Community.
- Bilingual Immigration and Healthcare Event (provides information and connection to services for Latino Community).
- National Minority Mental Health Awareness Month (NMMHAM) reached 34 libraries across the Commonwealth with a NAMI book exhibit.



Family Support Groups

A list of Family Support Groups

Acton	Fitchburg	Newton
Agawam (2)	Gloucester (3)	Northampton
Amesbury	Haverhill	Orange
Barnstable	Jamaica Plain	Pittsfield
Beverly	Lexington	Plymouth
Cambridge	Lowell	Revere
Clinton	Marlborough	Sandwich
Dorchester	Martha's Vineyard	Springfield
East Harwich	Middleton	Wellesley
Fall River	Nantucket	Weymouth
Falmouth	Newburyport	Worcester
		Williamstown
		Woonsocket, RI

NAMI Mass offers Family Support Groups (FSG) throughout the Commonwealth to meet the needs of family members and caregivers. The Family Support Groups are led by two NAMI Mass trained facilitators who share their experiences and resources with the group. They are also trained in problem-solving skills. The groups provide a secure, nonjudgmental environment where caregivers can discuss

concerns and benefit from the collective knowledge and experience of one another. As a result, the groups are action oriented, and participants leave each session feeling hopeful and empowered.

Currently, NAMI Mass offers 39 Family Support Groups. During FY2016, we trained 18 new facilitators who will lead even more groups in additional communities.

Criminal Justice Diversion Project

Now in its fourth year, NAMI Mass' Criminal Justice Diversion Project (CJDP) continues its vital work at the local and statewide levels to prevent the unnecessary arrest and incarceration of people with behavioral health conditions.

Mental health training for police officers: We work at the state and local levels to help police access high quality training on mental health response and de-escalation skills.

Crisis Intervention Team (CIT) training for local police officers

- **Over 200** police officers graduated from an in-depth, 40-hour CIT training as a result of a partnership between the city of Somerville, the Cambridge Police Department, and NAMI Mass.
- The number of departments involved **expanded from 7 to 10**, including Cambridge, Belmont, Brookline, Everett, Haverhill, Malden, Medford, Somerville, Waltham, and Weston as well as staff from Cambridge Health Alliance Public Safety and Pro Ambulance.

Statewide academy training for new police recruits

- New municipal police officers continue to receive expanded training on mental health response, as a result of NAMI's partnership with the Municipal Police Training Committee and DMH. **Over 3,000** new municipal police officers have received the 16 hours of interactive content, co-taught by an experienced officer and a licensed mental health clinician.

Community partnerships between police and behavioral health providers: The CJDP continues to work closely with local police and community partners to increase collaboration and develop strategies that divert people with behavioral health conditions from unnecessary criminal justice involvement and increase access to community supports and treatment. Highlights of this work in FY16 included:

I believe it is important for [police officers] to know that mental illness is treatable & that there are success stories.

Police Officer at CIT Training



CIT Graduation
in May 2016

Developed a regional first responder-mental health collaboration on the South Shore:

- Included participation from six police departments, two local hospitals, two ambulance companies, and the local emergency psychiatric service provider.
- Developed and piloted strategies to improve safety and access to care for people with behavioral health conditions who come into contact with police, including a police-hospital communication form.
- Facilitated **monthly case conferences** in Brookline and Medford to improve supports for individuals with complex behavioral health needs.
- Provided consultation to police departments regarding policies and procedures for mental health response.

Education:

- Facilitated working group on **best practices in mental health safety planning** between families and local police departments and developed educational materials.
- Provided education on **information-sharing** between criminal justice and behavioral health sectors.
- Conducted presentations to police leaders, providers, and community stakeholder groups to help dispel myths surrounding HIPAA and promote best practices in cross-system communication.
- Conducted presentations to over **200 police chiefs** on best practices and strategies for departmental approaches to mental health response.

Advocacy: The CJDП has been working with the legislature and other policymakers to develop two vital initiatives:

- **Senate Bill S.2320: An Act to Establish the Center of Excellence in Community Policing and Behavioral Health**
A statewide resource for training, technical assistance, and evaluation aimed at reducing the over-representation of individuals with mental illness in the criminal justice system. The Center would support jail diversion in all communities in the state.
- **Middlesex County Crisis and Diversion Center:** A community alternative to jail and hospitalization for people with mental illness. The Center would be a comprehensive service center with 24-hour bed capability and a range of services to meet individuals' complex needs. The CJDП received an FY17 grant to conduct the planning activities necessary, in collaboration with the Middlesex Sheriff's Office and other key stakeholders, to lay the foundation for the Center.

Left to right NAACP Mass Chapter President Michael Curry presented our Volunteer of the Year Award to Joseph Feaster.



NAMI Mass 2015 Convention



Carmen Rivera of NAMILatino presented the Unsung Hero Award to Marcos Rosenbaum.

Almost 400 NAMI members and other stakeholders attended our 33rd Annual NAMI Mass State Convention at the Doubletree by Hilton in Leominster, MA on **October 31, 2015.**

...Staff was fascinated by the panelists' presentations, and was extremely engaged and active participants... Feedback after the program was universally positive, and a number of staff said they feel much more capable of handling the challenges that some of their students present.

Auburn Public Schools

Allies for Student Mental Health

With one in five children in the US showing signs or symptoms of mental health challenges each year, schools are looking for ways to help them succeed.

Allies for Student Mental Health has evolved and grown as a popular offering to schools in Massachusetts to help educators understand emotional and behavioral issues. NAMI Mass provides a two-hour professional development program for teachers and other school personnel with a panel of experts to share their perspectives: a student who is a peer, a teacher and a parent. After three successful events in early 2016, we added the peer voice to the program, enhancing the understanding of mental health in students.

With exposure to superintendents at their Executive Institute in July 2016, demand for *Allies for Student Mental Health* has increased.

Advocacy Day & Legislative Priorities

We had another busy year on the Advocacy front. Our annual Lobby Day was held on **April 8, 2016**. Meeting with your elected official, or “lobbying for a bill” is all about “telling your personal story.” We use our Lobby Day at the State House to role play and give NAMI members and stakeholders “tips” about talking to their elected officials.

Congressman Joe Kennedy III was our keynote speaker; he was incredibly well received. The Congressman spoke about the broken mental health system and the “tireless work of patients and families who raised their voices and demanded change. Whether guaranteeing parity, increasing MassHealth reimbursement rates, or ending the harmful stigma surrounding mental illness... I am honored to stand beside advocates from across the Commonwealth as they bring this cause to the State House.”

Police Chief Craig Davis also spoke. He talked about the need to train police officers and first responders about mental health issues. Although a bit shy about tooting his own horn, Chief Davis has led the way first in the police department in Framingham and now as the Chief of Police in Ashland. In both towns, he established a Jail Diversion program where a clinician becomes part of the police department. Ashland now shares this program with nearby Sherborn and Holliston. Chief Davis also spoke passionately about the importance of the connection between training police and decriminalizing mental health.



Congressman Joe Kennedy III



Police Chief Craig Davis

Our FY 2016 Legislative Priorities are:

- The Department of Mental Health (DMH) budget. Funding for mental health services in the Fiscal Year (FY) 2017 legislative budget ended up at \$761.1 million. This budget represents an increase over FY 2016 funding, with a notable increase in funding for residential behavioral health treatment.
- A big push for us late this year was a bill that Senator Jason Lewis filed as a late file:

Senate Bill #2320

An Act to Establish the Center of Excellence in Community Policing and Behavioral Health

Sponsored by Senator Jason Lewis

Police officers are key first responders. With the right mental health training and partnerships, they can de-escalate situations, prevent unnecessary arrest or violence, and connect people to appropriate treatment and support. However, only 17% of police departments in Massachusetts have access to adequate mental health training. Without a cohesive statewide strategy, police efforts are disjointed and both officers and community members are at risk.

House Bill #786

An Act Requiring Mental Health Parity for Disability Policies

Sponsored by Representative Ruth Balser

This legislation eliminates the discriminatory practice that allows insurance companies to end long term disability benefits for people with mental illness after two years, even as policies for those with a physical illness provides coverage while person is under care of doctor and until age 65.

Senate Bill #578

An Act Relative to Mental Health Certified Peer Specialists

Sponsored by Senator James Eldridge

This legislation requires MassHealth to cover certified peer specialist services.

Advocacy Day
at the Mass
State House,
April 8, 2016



Senate Bill #1027 & House Bill #787

An Act to Require Health Care Coverage for Emergency Psychiatric Services

Sponsored by Senator Kenneth Donnelly and Representative Ruth Balser

These two bills are identical and each requires commercial insurance companies to pay for behavioral health emergency services provided by emergency services providers (ESPs) across the state. Presently, children and adults who receive MassHealth benefits are covered by ESP providers but unfortunately, most children and adults with private health insurance are not. This must change.

Reimbursement Rates for Health Care Providers

Behavioral health services are woefully under-reimbursed. From hospitals to clinics and everywhere else services are provided, there has been no coordinated effort to permanently improve provider reimbursement rates that will facilitate the delivery of high quality, integrated behavioral health care to all. As a result, many providers have reduced behavioral health services and abandoned this critical area of need.

Our NAMI Mass advocacy won some relief as the FY 2017 state budget included about a \$1.0 million increase for rates for behavioral health and substance abuse providers, and the Administration was able to get an additional \$3 million to MassHealth for behavioral health rates as well.

CEOs AGAINST STIGMA

A NAMI Mass campaign

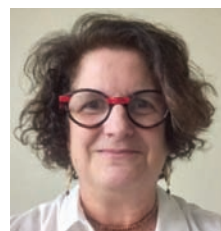
As a health plan we recognize that recovery can only come about when people feel supported. As CEO, I am committed to providing a safe, supportive and comfortable work environment where everyone can thrive.

> Tom Croswell, CEO Tufts Health Plan



During the summer of 2016, we hit the 100 CEOs mark in our quest to sign up 250 Massachusetts CEOs for CEOs Against Stigma. Pledged are Mayors, Sheriffs, Bank CEOs, mental health providers, and major hospitals in and around Boston including Peter Slavin from MGH, Elizabeth Nabel from Brigham & Women's and Kate Walsh from Boston Medical Center.

We welcome everyone to browse the website ceos.namimass.org to learn more about this campaign.



Dr. Barrie Baker, Tufts Health Plan, and now a NAMI Mass IOOV presenter.

A key aspect of the pledge is to present NAMI's signature program *In Our Own Voice* (IOOV). Two people relate their stories of diagnosis through recovery and their successes, hopes and dreams accompanied by an 11-minute video. Time is allotted for Q&A afterwards. A leading researcher on stigma, Patrick Corrigan, indicates that IOOV is the most effective program he's seen to combat stigma and bring understanding of what it is to have a mental health issue.

IOOV was presented at 34 organizations during FY2016, attending were 1,335 employees.

It is not unusual for an individual to disclose their own mental illness after an IOOV presentation. One such occasion happened at Tufts Health Plan:

Barrie Baker, MD, MBA holds three graduate degrees and is the Chief Medical Officer in the Public Plans division at Tufts Health Plan. Married for 25 years with two wonderful, grown children, Dr. Baker loves to travel, cook, and create art. Yet her success masks a personal secret she has held for a very long time — one which she believes others in the medical profession also keep. Now, to prompt others in the field and help erase the stigma that surrounds mental illness, Dr. Baker is revealing that she manages her own mental health condition.

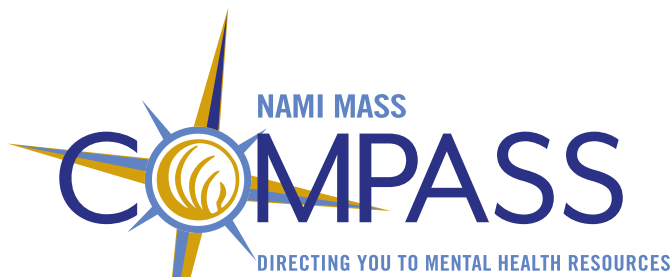
Tufts Health Plan hosted four IOOV presentations for its employees and Dr. Baker attended two of them. She was so moved by what she heard that it prompted her to disclose her

own mental health condition. "It was good to hear others' stories."

Outwardly naturally cheerful and optimistic, Dr. Baker admits that she's had thoughts of suicide and periods of depression since her youth. In her 20's, she was initially diagnosed with Bipolar Disorder, and her first major depressive episode and suicide attempt came in her early 30s. That is when she experienced major stigma — in medical school.

Dr. Baker recalled her second year of medical school. She was hospitalized after a suicide attempt and missed six weeks of classes. Upon returning, she learned that another student — who had also missed six weeks of school due to mononucleosis — was given a chance to make up the semester. Dr. Baker asked that she be given the same protocol, but was denied. Dr. Baker says she was told that the other student has what was referred to as a medical illness. "I was required to drop out and repeat the entire semester with a different class," says Dr. Baker. "I also learned to never mention my mental illness to anyone on a professional level again, especially in the medical profession."

Dr. Baker is now a trained IOOV presenter — she has presented at several CEO venues. Employees are surprised to hear that she is someone who struggles with mental health issues and is a successful medical doctor. Dr. Baker hopes that by telling her story she will provide hope and courage to others living with a mental health condition.



The NAMI Mass COMPASS program has come a long way in FY16. We trained five new Navigators in January 2016 and have retained a core group that is invested in delivering invaluable information about the complex mental health system to our callers. Each case is unique and each caller treated as an individual. We train our Navigators to listen first to the caller's concerns, ask important questions about the supports and resources available to the person who needs help, guide the caller toward local resources, and collaborate on an action plan for what to do next. Some calls and emails are straight-forward, where the person is looking just for a support group or needs help finding a provider. Many calls are more complicated, requiring Navigators to tease apart the story into actionable items that correspond to resources in our database. We do a lot of prioritizing with callers, helping them identify what needs to be done today, tomorrow, and what can wait. It is sometimes helpful to offer a short-term resource that mitigates the immediate crisis, and additionally follow up with suggestions for more sustainable solutions to an ongoing problem. With each call, Navigators learn more, add resources to our growing database, and are better able to help the next caller.

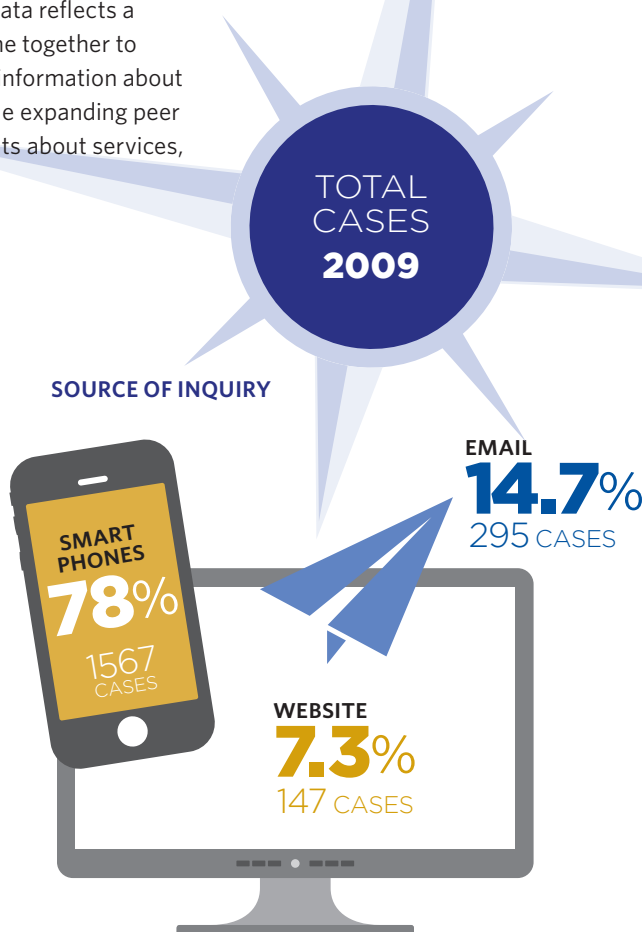
In addition to our day-to-day helpline work, COMPASS has formed an Advisory Committee to guide the project's progress and improve the quality of our work. Advisors include peers, family members, insurance plans, legal professionals, Emergency Service Providers (ESPs), Department of Mental Health (DMH) experts, Recovery Learning Communities (RLCs), and other helplines. Because our call data reflects a tremendous need for safe and supportive housing, Advisors have come together to improve our response to housing inquiries and more effectively track information about the deficits in housing resources statewide. Other top priorities include expanding peer support resources, improving response to DMH clients with complaints about services, and building a more comprehensive legal referral network.

In FY16, COMPASS fielded 2009 calls & emails

- **32%** of calls/emails referred to **support groups & NAMI programs**
- **18%** of calls/emails dealt with **housing issues**
 - About **40% of housing calls** (we can say 2 out of 5 calls) had to do with homelessness or a person at risk of becoming **homeless** (due to eviction, for example)
- **17%** of callers/emailers needed **help finding a program or provider**
- **9%** of callers/emailers were **in crisis** or needed help **planning for a potential crisis**
 - **Suicide** came up in about **one third of those cases (34.7%)**
- **8%** of calls/emails dealt with **getting insurance or issues with insurance**
- **6%** of callers/emailers disclosed **substance use** as part of their stories
- **4%** of calls/emails were about **employment issues** or finding employment
- **3%** of calls/email had to do with **youth mental health services**

Thank you for all this information. You have been very helpful. It means a lot to me that you spent so much time listening to my story. I also just want to say that it made a difference to me that you told me that you live with a mental health diagnosis. It changed the dynamic of our conversation in ways that I don't understand. Your personal sharing made it real; it allowed me to believe you when you affirmed my pain and my strength.

A caller after a very negative hospital experience





2016 NAMI WALKS Massachusetts

2016 was our 13th Annual NAMIWalks Massachusetts event on **Saturday, May 14, 2016** at Artesani Park in Boston, MA. Despite the construction going on at the park and the shortened Walk route, a good time was had by all.

The NAMI walk is a great opportunity for people served, family members, provider agency staff and other friends to come together to raise awareness and reduce the stigma associated with mental illness. The combination of fresh air, exercise, and friends with shared values make this a special day ... one I wouldn't miss. We appreciate the tremendous work that NAMI does and are proud to join with them on the NAMI walk each year.

Bill Sprague, Bay Cove Human Services

For the seventh year in a row, we were the top NAMIWalks campaign in the country out of 80+ NAMIWalks. When all was said and done we raised a stunning \$661,462, surpassing our goal of \$650,000.

We are grateful to our Volunteers, Team Captains, Walkers and their Donors, and our Corporate Sponsors. Together, they made the 2016 Walk a financial and community-building as well as stigma-busting success.

We distributed \$113,000 to 18 NAMI Affiliates.

Our Lead Corporate Sponsor, Beacon Health Options with their team and sponsorship contributions out-did themselves and raised over \$95,000. Generosity and the spirit of giving are alive and well at Beacon Health Options; we are so thankful.

NAMI Walkers Raise Funds

Our Gratitude is Boundless to those Walkers Who Raised \$250 and Up

Eric Adelman
Paul Albert
Regina Aldhurst
Kim Anderson
Molly Anderson
Michelle Andrews
Melanie Pasko & Angela Deorsey
Catherine Antoinetti
Rachelle Araujo
Steffi Aronson Karp
Lily Awad
Nancy Bacher

Megan Chalek
Linda Chance
Kate Chen
Benjamin Chin
Kerry Chouinard
Rebecca Cioffi
Bev and Gregg Cobb
Roxane Cohanin
Walter and Brenda Conlin
Fred Conti
Gene Conti
Jennifer Cook
Jeanne Cooke
Kate Cordner



Charlie Bacher
Ryan Bacher
Robin Bahr Casey
Bob Baldwin
Lucy Bates
Guy Beales
Dawne Benoit
Krista Berardi
Margot Birke
Rob Blasi
Lorely Bonilla
Cristina Booker
Fanny Bowley
Nicholas Bracy
Marcy Breier
Sue Brudner
Karen Brushett
Yvonne Burke
Jonathan Burke
Dianna Burniewicz Savosik
Joyce Calogero
Emily Campbell
Teresa Cardosi
Mary Carlson
John Casey

Lillian Cravotta-Crouch
Jay Curley
Carissa Curran
Lynda Cutrell
Patricia Danielson
Sharon De Vos
Carla Dean
Lawrence DeAngelo
Barbara DeCunzio
Christine Degan
Katelyn Dehey
Chantelle DelOrfano
Jenelle delOrfano
John DeRonck
Donna Dickie
Julia Dickinson
Priscilla DiLuzio
Samantha Dolat
Christina Donofrio
Diane Doyon
Ramona Duff
James Dwyer
Carrie Endicott
Talia Erickson-Mullane

Elaine Farash
Aalana Feaster
Joseph Feaster
Dee Febba
Michael Fetcho
Beth Flannery
Michael Foley
Kendra Forbes
Jessica Frost
Idonia Gaede
Bernard Gallant
Karlie Garden
Joanne Gay
Sidney Gelb
Erica Giannelli
Ellen Giannelli
Sheila Girard
Jon Gottlieb
Patti Gould
Julia Green
Jimmy Green
Greta Greenleaf
Karen Gromis
Fred Habib
Stephen Hadden
Christie Hager
Cathy and Eric Haines
Kathy Harris
Mary Harris
Kathryn Henderson
Katie Heravi
Janet Hodges
brigit hourigan
George Howe
Amy Hubbard
Carina Lati
Mark Ingram
Lucy Ingram
Kim Irving
Larissa James
Diane Joe
Jessica Juchnowski
Charu Kannan
Harry Kasparian
Lance Kasparian
Pamela Kendall
Patty Kenny
Judy Kenson
Jeff Kerzner
Byung Kil Kim
Jeffrey King
Beverly Klick
Kate Kling
Heather Klish



Holly Knapp
James Kobler
Kathy Kottaridis
Charleen Kress
Ally Kuriloff
Sarah Ladner Apollo
Ruth Lambert
Susan Lambert
Hannah Larsen
Bob Larsted
Kerry Lavallee
Liz Lazzara
Kim Le
Jaeok Lee
Caryl Moore Leeds
Eileen Levin
Joanne Light
Wendy Lindsay
Walter Linehan
Margie Linehan
Sonia Lipson
Alexandra Loehrer
Emily Lufkin
Jennifer M.
Betty MacIntyre
Bob MacIntyre
Kenneth Mack
Laura Madaio
Bonnie Madigan
Judi Maguire
Nancy Mahan

Raquelle Mesholam-Gately
Audrey Miller
Aileen Morrissey
Kim Mueser
Leonard Mulcahy
Timothy Murphy
Allyson Murray
Sir Christian Music
Kerry Nelligan
Catie Neville
Suzanne Newman
Joelle Marie Nourse
Michelle Nowers
Brian O'Connell
Melissa O'Connell
Kristen O'Shepa
Larry Ouellette
Deb Pacheco
Alicia Page
Stephanie Palmer
Kevin Palumbo
Nancy Parker
Randy Parker
Jennifer Payne
Sarah Pelletier
Shelby Pierce
Christine Pinney
Thomas Pinney
Jacqueline Pinney
Jessica Plante

Chris Sadkowski
Tom Scurfield
Bunny Shapero
Janet Shapero
Shamim Sharifi
John Sharp
Sara Sharp
Karen Sherman
Howard Sholkin
Rae Simpson
Janet Smith
Constantine Souris
Jonah Stang-Osborne
Nancy Stanton
Michael Stier
Kristin Stiles-Hall
John Straus
Daniel Sullivan
Robert Surette
Jane Tarlow
Miriam Tepper
Patricia Thatcher
Jessica Tirado
Patrick Tracey
Howard Trachtman
Alicia Tracy-Holmes
Nicole Treannie
Cathy, Doug and Bridget Treco
Molly Trisler
Toni Tucker
Charles Vadala
Lili Veruki
Anup Vidyarthi
Kathleen Vreeken
William Walsh
Jen Walsh
Elizabeth Watson
Molly Weis
Brian Wheelan
Carolyn White
Kimberly Whitman
Megan Wiechnik
Amanda Wiener
Eliza T Williamson
Henry Yeh
Lori Young
Jodie and Doug Zindle
Julia Zioto



Charlie Manzi
Sundus Mari
Jane Martin
Thomas Martin
Hannah Mason
Melinda Matthews
Brenda Maurao
Lynda McCumber
Sandy McGugan
Christian McGugan
Judy McKendry

Heather Poduska
Kate Poglitsch
Mary Pat Prado
Ewa Pytowska
Jeffery Querisio
Linda Raibert
Kathryn Raymond
Maureen Riley
Karen Rogers
Stephen Rosenfeld
Joey Rossignol
Marron Ryan

LEAD SPONSOR



Thank you to all our **Walk Corporate Sponsors**

NAMI Mass is grateful to all Corporate Sponsors of NAMIWalks Massachusetts 2016 as well as those companies that graciously provided in-kind donations.



PLATINUM SPONSOR

Sunovion Pharmaceuticals

PRESENTING SPONSOR

Mass Behavioral Health Partnership

MAJOR SPONSORS

Bay Cove Human Services
Blue Cross Blue Shield of Mass
Partners Healthcare
Steward Healthcare System
Vinen

GOLD SPONSOR

Forum Pharmaceuticals

SILVER SPONSORS

Advocates
Alkermes
Association for Behavioral Healthcare
Boston Medical Center/BU School of Medicine
Comfort Home Care
Commonwealth Care Alliance
Commonwealth Medicine/UMass Memorial
Justice Resource Institute
Public Consulting Group
Tufts Health Plan

START/FINISH LINE

Beth Israel Deaconess Medical Center
Boston Health Care for the Homeless Program
BMC HealthNet Plan
Bournewood Hospital
Cambridge Health Alliance
Community Counseling of Bristol County
Franciscan Children's Hospital
High Point Treatment Center
Mass Medical Society
Mass Psychiatric Society
McLean Hospital
Nizhoni Health Systems
Otsuka America Pharmaceuticals
PhRMA

BRONZE SPONSORS

ABT Associates
AstraZeneca
Bridgewell
Brockton Area Multi-Services, Inc.
Celticare Health Plan
Eliot Community Human Services
Fox25 Cares
Janssen
Lahey Health
Mount Auburn Hospital

Neighborhood Health Plan
North Suffolk Mental Health Association
Prakash & Ellenhorn
Riverside Community Care
South Coast Behavioral Health
South Shore Mental Health
The Schochet Companies
Walden Behavioral Care
William James College

SUPPORTERS

Adcare Educational Institute
Bose Corporation
Boston Public Health Commission
The Children's Castle
Cleary Insurance, Inc.
Eastern Bank
The Edinburg Center
Health Partners New England, Inc.
Institute for Health and Recovery
Mass League of Community Health Centers
Mental Health Association of Greater Lowell
PLAN of Mass and Rhode Island
South Bay Mental Health Center
Spectrum Health Systems, Inc.
UMass Medical/Department of Psychiatry
Youth Opportunities Upheld, Inc.

OTHER

Alternatives Unlimited
The Village Bank
The Bridge of Central Mass
Children's Friend and Family Services
Mass Association of Behavioral Health Systems, Inc.

IN-KIND DONATIONS

Blandford Ski Area
Boston Duck Tours
Boston Red Sox
Boston Tea Party Ships and Museum
Boston University Fitness and Recreation Center
Central Rock Gym
The Cheesecake Factory
Chipotle
Coolidge Corner Theatre
The Discovery Museums
Green Mountain Coffee/Keurig
The Huntington Theater Company
Institute of Contemporary Art/Boston
Isabell Stewart Gardner Museum
JP Licks
KHC Audio
Nashoba Valley Ski Area
New England Aquarium
New England Revolution
Sam Adams Brewery
Shake Shack
Skywalk Observatory
Starbucks
Swan Boats of Boston

We make every effort to include all the generous corporate sponsors who support us, the businesses that give us in-kind donations, the Walkers who contribute unstintingly and the teams that raise money. We may inadvertently omit an organization, a donor or team, or misspell a name. Please accept our apologies and contact our office.

TEAMS

Life Blood of the Walk!

Extra special shout out to the 2016 Registered Teams and their Team Captains who raised funds

#Bumblebees • Jessica Frost
 #HMHPROUD • Joyce Laidley
 99 Faces • Holly Knapp
 Abt Associates • Susan Pfeifferle
 Advocates • Nancy Dupill
 AKA Wellesley • AKA Wellesley
 All Minds Matter • Priscilla DiLuzio
 Alternative Home Health Care • Robert Surette
 Ann's Angels 2016 • Susan Richard
 Anxiety Driven • Christine Higginbottom
 Arbour Hospital Jamaica Plain • Kathleen Riche
 B Strong • Kristen O'Shepa
 BAMS! • Teresa Belsan
 Bay Cove Human Services • Elizabeth Hestad
 Bay State Community Services Team • Theresa Burke
 BC School of Social Work Team • Idonia Gaede
 Beacon Health Options/MBHP • Kaitlyn Sudol
 Bedford VA Peer Support • Karen Milliken
 Bernie Gallant • Bernard Gallant
 Best Buy • Kylie Munise
 BHCHP • Georgia Thomas-Diaz
 Blue Cross Blue Shield of Massachusetts • Karima Shah
 Bob's Army • Tom Madaras
 Boston College: Campus Walkers • Katherine Ballas

Brandon Residential Treatment Center • Ariana Deeley
 BU Center for Psychiatric Rehabilitation • Leonard Mulcahy
 Build a Life Worth Living • Cameron Chinetti
 Cailean's Walkers • Brittany Rubertone
 Cambridge Health Alliance • Miriam Tepper
 Carney Hospital • Marianne Marinelli
 Cascapians Walking for David • Emily Lufkin



Cathy's Crusaders (Employment Options) • Margie Linehan
 CCBC • CCBC Attleboro/Taunton
 CityPsych Wellness, Inc. • Rob Blasi
 CliftonLarsonAllen • Alexander Habif
 ClinEdge & Blue Theory • Georgia Ward
 Comfort Home Care • Kate Cook

Confirmation 2016 • Laura White
 Corner Clubhouse • Amy Fermi
 D/M/R • Roy Lynch
 DBSA Boston Deb Believers • Lillian Cravotta-Crouch
 DMH Northeast Area 2016 • Nicole Doyle-Tedford
 Dream Chasers • Alyssa Nickerson
 Dwyer • James Dwyer
 ECHS Northshore • Andrew Moskevich
 Education, Inc. • Natalie Curran
 Eliot CBHI • Kathleen Callahan
 Eliot Human Services • Brian O'Connell
 Eliot Team Lynn • Patrick Connolly
 F2F MetroWest • Shamim Sharifi
 Family-to-Family Central Middlesex • Dee Febba

Foley Family • Michael Foley
 Fox25 Cares • Fox25 Cares
 Friends Against Stigmas • Alyssa Mann
 Growing Up Mental • Samantha Violet
 Guardians of Strength • Dawn Doyle
 Hannah • Lori Young
 Help Fight the Stigma • Sharon Mazaka
 HSS 2016 • Byung Kil Kim
 I Dream of Jenny • Lili Veruki
 IHP NAMI Walks • Kerry Kearns
 I'm Not Ashamed • Liz Lazzara
 Just Keep Swimming • Michelle Kelly
 KATELYN's KLAN • Maureen Riley
 KCK • Katelyn Dehey
 Kristin's Hope • Kristin Kolodziej
 Lady Luck • Lucy Bates
 Lowell Stigma Stoppers • Shamir Rivera
 Madness 2 Our Method • Alicia Tracy-Holmes
 Massachusetts Mentor Taunton TM • Nicole Paicopoulos



Massachusetts PEC • Emily Mohr
 MCC Nursing Students • Jennifer Bonia
 McLean Hospital • Adrienne Gerken
 Mental Health for Everyone • Margot Birke
 Metro Boston Recovery Learning (MBRLC) • Michael Kanter
 Metro North Walkers • William Burke
 Mindfulness • Amy Volpigno
 Morton Hospital • Christina Cronin
 Mother and Daughter Team • Carol Nelson
 Mount Auburn Hospital • Jennifer Brown
 NAMI Boston • Stephen Rosenfeld
 NAMI Cambridge • John Sharp
 NAMI Cape Cod & the Islands • Nancy Bacher
 NAMI Central Mass Walks 2016 • John Casey
 NAMI Central Middlesex • Tom Scurfield
 NAMI GB CAN • Howard Trachtman
 NAMI Greater North Shore • Kevin Palumbo
 NAMI Mass COMPASS • Megan Wiechnik
 NAMI Mass State Office • Karen Gromis
 NAMI MetroWest • Walter Linehan
 NAMI Northeast Essex • NAMI Northeast Essex Affiliate
 NAMI South Shore • Kathy Castagna
 Never Accept DeFeet • Cheryl Brown
 New Moon Collective • Charles Vadala
 New York Life Boston General Office • Nicholas Bracy
 Newton Wellesley • Nancy Stanton



North Suffolk Striders • John Kmetz
 Parents and Advocates for Children • Nancy Parker
 Plymouth Rocks • Barbara DeCunzo
 Poduska • Heather Poduska
 Point After Club • Anna Harris
 Programs for People • Kevin Pelletier
 Raya & Co. • Raisa Postoronka
 Recovery is Real (DMH Metro Boston Area) • Robert Foster
 Rho Epsilon Omega • Janine Whitter
 Ribeiro Team • Olga Ribeiro
 RYAN DOES RESI • Kim Le
 Sabrina's Team • Sabrina Fookson
 ScBH Helping Hands • Linda Jardin

Serendipity • Diane Tomacelli
 Smiles for Miles • Karlie Garden
 South East Recovery Learning Community • Sandra Whitney Sarles
 SSMH • Dominique Tinsley
 Step by Step Supportive Services Inc • Step by Step
 Stigma Busters • Michelle Moriarty
 Stigma Free • Whitney Doiron
 Stigma Separates Us • Eric Duma
 Stigma Stompers • Rachelle Araujo
 Strides Against Stigma • Michael Stier
 Success • Khara Baptist
 Team Amber Mace • Mace Family
 Team Alkermes • Larissa Khouw

Team Boston Medical Center (BMC) • Larkin Elderon
 Team Burnie • Dianna Burniewicz Savosik
 Team Cathy • Patricia Thatcher
 Team Edinburg Shining Stars • Janet Hodges
 Team Elm Brook • Carrie Endicott
 Team Feaster • Aalina Feaster
 Team Genki • Sarah Pelletier
 Team Gideon • Robyn Breighner
 Team Honey Badger • Heather Badger
 Team Janssen • Kathy Harris
 Team Julia • Michela Smith
 Team Kiva • Mary De Bonte
 Team KS • Samantha Berger
 Team Laurie • Laurie Martinelli
 Team Lowell NAMI Renaissance
 Team Mi'gmaq • Karen McGravey-Gajera
 Team NAMI North Central • Guy Beales
 Team Otsuka • Caroline Fisher
 Team Raymond/Mid State Hike • Allison Raymond
 Team Riverside • Dannielle Ford-Allen
 Team Sunovion 2016 • Alyssa Horton
 Team Tracey • Patrick Tracey
 Team Vinfen • Erin Tighe
 Team Walden • Kristin Brawn
 The Berardi Ladies • Krista Berardi
 The Bipolar Bears • Alexandra Loehrer
 The Buckeye Bullets • Abby Hutt



The Grateful Heads • Eliza T. Williamson
 The Jung and the Restless • Samantha Tilton
 The McGoo Crew • Sandy McGugan
 The Spot • Carina Lati
 The Toothbosses • Richard Wolfert
 Travis's Team • Jodie and Doug Zindle
 TSH • Clair Kershaw
 UMass Psychiatry • S Aziz
 Walking with Hope • Jennifer M
 Waverley Walkers • David Weene
 Westwood Lodge and Lowell Treatment Center • Katherine Bray
 Wiley Malden MA • William Filios
 Winthrop House • Kate Cordner
 Work Without Limits • Amanda Elinoff



Thank You! Individual Donors

Ralph and Mary Abbott
 Susan Abbott
 Donald and Margaret Abells
 Therese Ahern
 Renee Albert
 Susan Albert
 Bonnie Allen
 Meg Allyn
 Esther Davis Almgren
 Kathleen Ames

Richard and Heather Ames
 Eileen Amy
 Sarah Anderson
 Pamela Andrews
 Donna Andrews Alley
 Dr. John Aney
 Jonas and Elaine Angus
 Gail and Tony Annis
 John Ansbro
 Barbara Anthony
 Robert Antonioni

Joan Apteker
 Ann Archambault
 Edward and Barbara Arditte
 Ruth Arena
 Neil Aresty
 Elissa and Daniel Arons
 Carl and Diane Aronson
 Steffi Aronson Karp
 John Arsenault
 Judith Asselin
 Charles Atkins

Rebecca Atkins
 Nancy Atwood
 Elsa Roberts Auerbach
 Frances Avrin
 Laura Baber
 William Bacic
 Kenneth Backaler
 Howard Baker-Smith
 Patricia Barbour
 Ana Bard
 Brian Barde
 Patrick Bareiss

Bruce Barham
 Paul Barrett
 Joseph Barrows
 Pat Bartles
 Christopher Bates
 Brenda Battles
 Lindsey Baughman
 Dr. Prudence Baxter
 Gerald and Jeanne Beaulieu
 Nathan and Betty Bech
 Dr. Kathy Becher
 Deborah Beck

Dr. Erin Belfort
 Robert and Natalie Bell
 Emelia Benjamin
 Patricia Feeley Benkoski
 Dr. William Bennett
 Michael Bennett
 Dr. Eugene Beresin
 Mary Bergeron
 Dorothy Bergin
 Sam Berk
 Nancy Berliner
 Matt Bermingham

Jackie Elliott
 Judith Elliott
 Kathy Elliott
 Matt Ellis
 Priscilla Ellis
 Elissa Ely
 Kathleen and Douglas Engebretson
 Peter and Margaret Enrich
 Dr. Claudia Epelbaum
 Abigail Erdmann
 Ronald and Alice Eskin
 Henry Euler
 Nadine Evans
 Jean Fain
 Dr. William Falk
 Ruth and Andrew Falletti
 Edward Farley
 Katherine Farrell
 Sharon and Carl Fawcett
 Joseph Feaster Jr.
 Dee Febba
 Patricia Feeley
 John Feeney
 Emily Feinberg & Rob Restuccia
 Christine Feldt
 Diane Felicio
 Marc and Gail Fenton
 Holly Ferguson
 Leslie and Susan Ferlazzo
 Allison Ferlito
 Sandra Ferreira
 Barbara Fertig
 Michael Fetcho
 Steven Feye
 Danuta Fichna
 Paul Finnegan
 Maggie Fiorella Winter
 Dr. Steven Fischel
 Doris Fisher
 Dr. Caroline Fisher
 Stan Fisher
 Matt Fishman & Robin Lipson
 Alice Fitzgerald
 Mary Fitzgerald
 Michael and Jennifer Fitzpatrick
 Theresa Flaherty
 Patti Flanagan
 Thomas Flanders
 Robert Fleischner

Lisa Fleming
 Rita Fleming-Castaldy
 Nancy Flescher
 Cym and Claudia Fogg
 Joseph Foley
 Paul Foley
 Jessica Folgore
 Charlotte Ford
 Harold and Joanna Fortna
 Lisa Fournier
 Ellen Foust
 Marcia Fowler
 Lisa Fownes
 Doug Foy & Paula Gold
 James Frances
 Thomas Francis

Joseph Garcia
 Raul Garcia
 Allen Gardner
 Dr. George Gardos
 Patty Garin
 Brooke Garlicke
 Cole Garrick
 Brian and Molly Garrity
 Lee Gartenberg
 Elema Gascon-Vera
 Jeanine Gawthrope
 Sid Gelb
 Ross and Anne Gelbspan
 Dr. Max Geller
 Laurette Genest
 Adrienne Gerken
 Sandra Gesuelle-Hart

Dr. David Golden
 Dr. Norbert Goldfield
 Richard Goldman
 Kimberly Goldstein
 Richard and Carol Gomberg
 Russell Gontar
 Phillip Gonzalez
 Michael Good
 Dr. Jesse Goodman
 Michael Goodman
 Dr. Christopher and Julie Gordon
 Dr. Gary Gottlieb
 Jon Gottlieb
 James Gotz
 Patti Gould
 Charlotte Govoni
 Patricia Graham

Ellen and Michael Hallor
 Katherine Halpainy
 Lisa Halpern
 Fred and Glennis Halterman
 David Hamel
 Patrick Hamilton
 Roy and Sylvia Hammer
 Marcia Hams
 Arnold Hanawalt
 George Handran
 Robert Hanlon
 Robert and Ethelind Hanninen
 Carl and Signe Hanson
 Dr. James Harburger
 Nicky Hardenbergh
 Mary Harkin
 Patricia Harney
 Christopher Harris
 Dr. Jennifer Harris
 Chase Harrison
 Dr. Alexandra Harrison
 Scott Harshbarger
 Carol Hartman
 Mary Haskell
 Priscilla Hathaway
 Miriam Hatoum
 Alexander Hayes
 Mary Hayes
 Frank Haynes
 Pamela Heacock
 Jonathan Hecht
 Dorothy Held
 Jennifer Heller
 Margaret and William Henderson
 William Henning
 Katie Heravi
 Dr. Judith Herman
 Kathryn Hintz
 Yolanda Hippensteele
 Linda Hirschberg
 David Hirshberg
 Dr. Marie Hobart
 Gene Hoffman
 Helen Holcomb
 Edward and Sarah Holden
 Margaret Holland
 Marilyn Holman
 Ron Holmes
 Jay Holtzman
 Penny Hommeyer
 Brian Honan

Ann Ellen Hornidge
 Jerry and Suzanne Houghton
 Richard and Nancy Howard
 Agnes and John Howell
 John and Jane Howland
 Chris Hudson
 David Huenemoerder
 John and Nancy Huggins
 Karen Hughes
 Joyce and Grace Hurley
 Nhu Huynh
 Tomomi Inomata
 Nancy Isola
 Dan Jackson
 Ira Jackson
 Ken and Abby Jaffe
 Deanna Jantzen
 Chris Jedrey
 Diane Joe & Guy Beales
 David and Janis Joel
 Christine Johnsen
 Andrew and Deborah Johnson
 Peter and Francene Johnson
 Phil and Beverly Johnston
 Hugh and Fleur Jones
 Christina Joseph
 Sarah Joseph
 Anne Josephson
 Cheryl and Stephen Juba
 Diane Juliar
 Deborah Kadish
 Dr. Alvin Kahn
 Dr. Richard Kaiser
 Toby Kaminkow-Cohen
 Marina Kaplan
 Judith and Daniel Karp
 Harry Kasparian
 Rudy and Helen Kass
 Phillip Kassel
 Dr. Howard Katz
 Jamie Katz
 Susan Kauffman
 Dr. Monte Kaufman
 Dr. Annette Kaweck
 Kathleen Keating
 Keating



Fred and Betty Frankel
 Toni Fredette
 Donald and Ruth Freedman
 Janet Freehling
 Barney Freiberg-Dale
 Jeanette and Daniel Friedenson
 Dr. Rohn Friedman
 Howard Friedman
 Judith Friedman
 Adam Frost
 Dr. Carl Fulwiler
 Janice Furlong
 Glenn Gagnon
 Sara Galantowica
 Patrice Gallagher
 Dr. Jerome Gans
 Paula Ganzi
 Russell Ganzi
 Jacqueline Garabedian
 Dr. Robert Garber

Pamela Giannatsis
 Joseph Giannino
 John Gifford
 Dr. and Ms. Michael Gill
 Kim Gilligan
 Stephen Gilligan
 Harriet Gilman
 Roger and Dorothy Gipps
 Robert and Donna Gittens
 Lorenz Glaser
 Dr. Leonard Glass
 Sharon and John Glass
 Dr. Jean Berko Gleason
 Donald Goff
 Nelson and Theresa Goguen
 Dr. Robert Goisman
 Leonard Gojer
 Dr. Jeffrey Robbins Goldbarg

Mervin Gray
 Mel Greenberg
 Maryanne Greene
 Lois Greene
 Maryann Greene
 Robert Greenwald
 Paul Gregoire
 Karen Gromis
 Rita and Laurence Grossman
 Henry and Judith Grunebaum
 Mary Jean Guidette
 Karen Gunn
 Phil Guymont
 Paul and Joanne Guzzi
 Liz Haines
 Rob Hajer
 Timothy Haley
 Janek Halicki
 Renee Hall
 Andrea Hallion



Dr. Gerald Margolis	Betsey McKearnan
Harry Margolis	Adrienne McKee
David Margulies	Diane McKee
Desta Marika	Judith McKendry
Melvin Markowitz	Susan McLaren
Dr. Elizabeth Marks	Patricia McLaughlin
Lina Marks	Paul McLaughlin
Renee Markus	Colleen McManus
Hodin	Patricia McMullin
Nina Marlowe	David McWalter
Bob Marra	Phyllis Meade
Elizabeth Marshall	Nicci Meadow
Robert Marshall	Ellen Meagher
James Martin	Jerome Medalie
Thomas and Jane Martin	Leslie Medoff
Laurie Martinelli	Kathleen Melendy
John Marttila	Jerome Mello
Anthony Masse	Dr. Sherri Mello
Nancy Mattei	Eric and Ellen Meltzer
David Matteodo	June Mendelson
Danna Mauch	Judy Meredith
Mary Maughn	Jennifer Merrill
Dale Mayer	Dr. Ann Merritt
Dr. Joseph McCabe	Wayne Merritt
Anna McCadden	Nicholas Metcalf
John Mccalden	Dr. W. Peter Metz
Eugene McCarthy	Claire Metzger
Lucille and Thomas McCarthy	Robert Meunier
Mary McCarthy	Rachel Meyers
Harold McCaughey	Peter Middleton
Donna McCormick	Mayra Mieses
John and Judith McCoy	Paul Milbury
Dr. Dennis McCrory	Dr. Martin Miller
Kevin McDonald	Megan Miller
John McDonough	Peter Miner
Susan McGonagle	Dolores and Marvin Mitchell
Clare McGorrian	Robert and Bunny Mogilnicki
Dr. James McGuire	Jerry and Suzanne Mogul
Thomas McGuire	Joseph Moineau
James and Katherine McHugh	Margaret Moncy
Maura McHugh	Thomas and Denise Monks

Russell and Elaine Keene	Hilda Kriteaman	Joslyn Levy	Elizabeth Lowry
Dr. David Keller	Maria Krokidas	Mela Lew	Dr. Kirk Lum
Barbara and Jerry Kellman	Helen and David Krzeminski	Linda Lewis	Helen and Richard Lupo
Sally Kelly	Elizabeth Kulas	Rosana Liberman	Herbert Lurio
David Kelston	Elaine Kuttner	Scott Liebert	Dr. Anne Lutz
Corinne Kennedy	Greg and Suzanne LaBine	Jacqui Lindsay	Hollister Steele Lyne
Marian Kennedy	George Labovites	Rachelle Linner	Douglas Macauley
Michael Kennedy	Marylin LaClair	Judith Lippke	Betty MacIntyre
Judith Kenney	William Lahey	Cyrus and Carol Lipsitt	Chris Mackenzie
Mark Keroac	Karen Laidlaw	Dr. Benjamin Liptzin	Robert and Kathryn MacLaughlan
Mark and Yvonne Kesner	Pamela Lainez	Stephen and Sandra Litchfield	Eric MacLeish
Liza Ketchum	Anne Lambert	David Little	Patricia Madden
David and Janet Kiah	Susan Lambert	Sherry Penney	Nanette and James Maden
Hilary Kiley	Christina Lamkin	Livingston	Dr. Ann Marie Madigan
John and Tappy Kimpel	Timothy Lanagan	Catherine Lizotte	Judith Maguire
Joseph King	Gloria Landahl	Dr. Carol Locke	Nancy Mahan
Linda King	Nina Landon	Ernest Loewenstein	Grace Mahoney
Patrick King	Annabel Lane	Catherine and William Logue	Sarah and Timothy Mahoney
Philip and Marjorie King	Nancy Lane	Ann Loomos	Joanne Malone
Phyllis Kizner	Meryl and Melvin Langbort	J. Dirk and Marian Lorenz	Don Maloney
Bennett Klein	Dr. Catherine Lanteri	Enrico Lorenzini	Deborah Manegold
Dr. Trude Klein Schmidt	Elaine Larkin	Ben and Sandy Lovell	Dan Manning
Holly Knapp	Wendy Lavallee	Robert Lovezzola	Ed and Melissa Manzi
Ann Knowles	Bill and Betsy Lawson	Beth Lowd	Jeffrey Marcus
Steve Koppel	Dr. Jasper Lawson	Lowell, Linda Lowell	
Anne Kott	Harold Leach		
Laura Koumarianos	Tom Lebach		
Yamil and Suzanne Kouri	Carol LeBlanc		
Cheryl Kovalsky	Ellen Lecce		
Lisa Kowalski	Edward and Sherry Lee		
Kathryn Krajewski	Rachel Lee		
Martin and Diane Krasnick	Robyn Leonard		
Joan Kravetz	Mary Kay Leonard		
Sabrina Kreber	Nicholas Lesieur		
Charleen Kress	Conrad Levenson		
Lauren Krikorian	Margaret Levin		
Kristen McHugh	Martin Levin		
	Lauren Levine		
	Dr. Deborah Levy		



Kyra and Coco Montagu	Joyce Murphy	Eileen O'Brien	Panych
Sandra Moody	Karen Murphy	R. Christopher O'Brien	John Papas
Susan Moody	Ned Murphy	Monique Ocasio	Nancy Parker
Jennifer Moran	Tim Murphy	Louise O'Connell	Rita Parker
Nicole Morel	Dax Bayard Murray	Mara O'Connor	Wendy Parmet
John Morin	Eileen Murray	Catherine O'Leary	Jennifer Payne
Mary Morin	Susan Murray	Naomi and Eric Olson	Maryanne Peabody
Catherine and David Morocco	Beverly Myers	Andrew and Jill Onderdonk	Josephine Peltier
Dr. Richard Morrill	Anders Naar	Barbara and Frank O'Neal	Roy Perlis
Dr. Jesse Morris	Herbert and Jean- nine Nachtrab	Gretchen O'Neill	Robert Persons
Joanne Morris	Mary and Sherif Nada	Scott O'Neill	Joseph Peters
Terri Mosakewicz	Nicholas Nagyker	Melody Orfei	Glenn Peterson
William Mosakowski	David Nalven	Araceli Orozco- Hershey	Robert Petitti
Peggy Moses	Akhila Nandgopal	Dr. David Osser	Paul Pezzella
John and Lucia Mudd	John and Susan Neale	Dr. Abigail Ostow	Mary Phelan
Stephen Mueller	Deidre and Barry Nectow	Lawrence Ouelette	Ralph Piantedosi
Kim Mueser	Carolyn Nee	Laurie Ovenden	Doris and Joseph Pienta
Kevin Mulder	Donald and Lita Nelsen	Robert Owen	Russell Pierce
Virginia Mullen	Juliana Neuspiel	Jane Owens	Dr. Martha Pildis
Paul Mullins	Laurel Newson	Deb Pacheco	Cynthia Piltch
James Mumford	Rebecca Nidositko	Barbara Page	Dr. Debra Pinals
Douglas Munoz-Lewis	Spencer Nineberg	Jane Pagett	James Pingeon
Denise Murphy	Joseph Noonan	David Pagnini	Karen Pita
Edward Murphy	Dr. Paul Noroian	Glenn Palmer	Dr. Eric Plakun
Janet and Henry Murphy	Shirley Novakoff	Dr. Lawrence	Paul Plasky
			Richard and Orah Platt
			Carol Plotkin
			Ida Plotnick



Thank You to the Foundations & Corporate Donors in FY 2016

Alchemy Foundation	Health Foundation of Central Massachusetts	Partners Health Care
Allstate Employee Giving	IBM Employee Services Center	Penguin Group
American Express Foundation	Inavale Foundation Inc.	Ropes & Gray LLP
Bank of America Foundation	J&J Health Care Systems Inc	Schneider Electric
Bay State Community Services	J&L Engle Family Foundation	Silicon Valley Community Foundation
Blue Cross Blue Shield. of Massachusetts	John W. Alden Trust	South Acton Congregational Church
Boston Scientific Foundation	Johnson & Johnson	St. Luke's Alumni Association
Bright Funds Foundation	Just Give	T.Rowe Price
CA, Inc	Keybank Foundation	The Alice M Grey Trust
Commonwealth Care Alliance	Kimberly-Clark Foundation	The Benevity Community Impact Fund
Commonwealth of Massachusetts	Massachusetts Association for Mental Health	The Boston Foundation
Community Health Charities	Math Works Inc	The Cosette Charitable Fund
Cummings Foundation	Melvin S. Cutler Charitable Foundation	The GE Foundation
Department of Mental Health	Merck Partnership for Giving	The Keating Family Fund
Deutsche Bank Americas Foundation	MetroWest Community Health Foundation	The Plymouth Rock Foundation
Eli Lilly	Microsoft Giving Campaign	The Rodger Davis Trust
Eliot Community Human Services	Mile High United Way of Denver	The William Harris Foundation
Fallon Total Care	National Association of Social Workers	Thermo Fisher Scientific
First Parish Church of Groton	Nemasket Group Inc	Trip Advisor Charitable Foundation
First Unitarian Society in Newton	New Balance Athletic Shoe	Value Options, Inc
Gill Foundation	North Congregational Church	Vinfin Corporation
		Work Inc.

Rachel Pohl
Dr. Alan Pollack
Andrew Pond
Joseph Poras
Alan and Suzanne
Posner
Harry and Betty
Potter
Hale Powell
Julia Powers
Kathleen Powers
Lonnie Powers
Mary Pat Prado
Christine Previtera
Cynthia Price-Taylor
Mark Provost
Hana Pyro

Dr. Luce Reiss
Joyce Renjilian-
Burgy
John Renner
Anthony and Jen
Renzoni
Joe and Nancy
Restuccia
Catherine Reuben
Kenneth Revett
Mark Reynolds
Joseph Ricca
Jane Richardson
Maurice Richardson
Rachel Richardson
Dean and Pamela
Richlin

Drs. Daniel and
Barbara Rosenn
Alison Rosenthal
Deborah Rosenthal
Elizabeth Rosseel
Dan and Colleen
Rossmanith
Jon and Bonnie
Rotenberg
Judith Roth
Elliot Paul Rothman
Christine Rowan
Patrick Royer
Elana Rudavsky
Evelyn Russell
Deborah Ryan

Diana Schotte
Robert Schueler
David Schwartz
Dr. Jonathan
Schwartz
Steven Schwartz
Karen Schwartzman
Carl Sciortino
Dr. Ed and Barbara
Scolnick
Glenn Scott
Stephen Scully
Tom Scurfield
Paul Seeley
Michael Segal
Richard Segan

Dr. Miles Shore
Derri Shtasel
Ken Shulman
Eileen Sickler
Hyman Siegal
Dr. George Sigel
Susan Silberberg
Rachel Silver
Stuart and Patricia
Silverman
Lois Simon
Leeann Simons
Rae Simpson
Madelene Singarella
Amy Singer
Ken Sklar
Else Smedemark
Alexandra Smith
Bob and Beth Smith
Dr. Blake Smith
Edwin and Katharine
Smith

Karen Smith
Marilyn Ray Smith
Peter and Helen
Smith
Tom Smith
John and Ella
Smolenski
Linda and Randall
Sneider
Thomas and
Meredith Sobol
Constantine Souris
Donna Souris
South Acton
Congregational
Church
Anne Speakman
Susan Spector
Emily Spieler
Jim Spink
Steven Spitz
Robyn St. Clair
Katharine St.
Germain
Anne St. Goar
Henry and Lorraine
St. Laurent
Robyn St. Clair
Joy St. John
Nancy Stanton
Richard and Anne
Steadman
Ruth Stein
David Steinberg
Deborah Steinberg
Gail Steinberg
Valerie and John
Stelling
Margaret
Stephens-North

Judy Stephenson
Donald and Erica
Stern
David Sternburg
Danielle Stevens
Theresa Stevens
Patricia Stewart
John and Liza Straus
Margot Strauss
Nan Stromberg
Barbara Stromsted
Peter Sturges
Steve Subrin
Marylou Sudders
Daniel Sullivan
Frances Sullivan
Kate Sullivan
Katherine Sullivan
Nancy Sullivan
Paul and Judith
Sullivan

Paul Summergrad
Marie Sunder
Connie Sussman
Richard Suval
Frank Sweet
John Sweet
Karen Sweet
Phyllis Swift
Scott Taberner
Kenneth Talan
Dr. Suzanne Tarlov
Robert and Sharon
Taube
Glover Taylor
Daniel Teplin
Margaret Tharp
Miles and Sharon
Theeman
Patricia Theroux
Sarbjit Thiara
James Thompson
Sara Ting
Griselda Tomaino
Joseph Tonkonogy
Juli Shea Towell
Howard Trachtman
Mary Tracy
Susan Tracy
Shauna Trahan
Shirley Traite
Deanna Traweck
Joseph Treff
Erica Tritta
Carol Trust
John and Judy Tully
Alice Tuomivaara
Nancy Turnbull
Jayne Tyrell
Lisa Uyehara



Ewa Pytowska
Dwight Quayle
Karen Quigley
Sara Quinn
Joan Rachlin
Dr. Seth Rafal
Mala Rafik
Robert Rak
Cheryl Ramirez
Daniel and Suzanne
Ranieri
Dr. Nancy
Rappaport
Howard and Susan
Rashba
Christine
Rasmussen
Scott Rauch
Kathryn Raymond
Raymond
Jim Re
Joel and Rachel
Reck
Clare Reilly
Laura Reiner
Doris Reisig

John Rikala
Linda Rinearson
Melinda Rios
Deborah Robbins
Catherine and Gene
Robillard
Gail Robinson
Margaret Robinson
Anthony and
Tamara Rogers
Karen and Gregory
Rogers
Tracy Rogers
Chandra Rohit
Lee and Marilyn
Rosenbaum
Marcos
Rosenbaum &
Betsy Tarlin
Jaclyn Rosenfeld
Stephen Rosenfeld
CJ Rosenfeld
Mahoney
Sarah Rosenfeld
Mahoney

Margaret Ryan
Marie and William
Ryder
Kathryn Sabella
Lora Sabin
Chris Sadkowski
Laura Safar
Karen Safford
Rita Sagalyn
Irene Sahatjian
Lorianne
Sainsbury-Wong
Elayne Saltzman
Sara Samaniego
Jeff Sanchez
Janet Sanders
Laurence Sarazini
Lois Simon Sauls
Brendan Saunders
Neil Savage
Rev. Warren Savage
Barbara Schapiro
Ellen Jane Scheiner
Dr. Robert Schlauch
Susan Schnur

Arthur Segel
Robert Seifert
Matthew Selig
Christina Severin
Philip and Barbara
Shambaugh
James Shannon
Bunny Shapero
Dorothy Shapero
Jonathan Shapiro
Karen Shapiro
John and Sara Sharp
Merri Lea Shaw
Susan Shaw
Diane Shea
George Shea
Stephen Shea
Maureen and John
Sheeran
Kim Shellenberger
Audrey Shelto
Richard Sheola
Sue Sherry
Rachelle Shokoti
Howard Sholkin

Constantine Souris
Donna Souris
South Acton
Congregational
Church
Anne Speakman
Susan Spector
Emily Spieler
Jim Spink
Steven Spitz
Robyn St. Clair
Katharine St.
Germain
Anne St. Goar
Henry and Lorraine
St. Laurent
Robyn St. Clair
Joy St. John
Nancy Stanton
Richard and Anne
Steadman
Ruth Stein
David Steinberg
Deborah Steinberg
Gail Steinberg
Valerie and John
Stelling
Margaret
Stephens-North

Robert and Sharon
Taube
Glover Taylor
Daniel Teplin
Margaret Tharp
Miles and Sharon
Theeman
Patricia Theroux
Sarbjit Thiara
James Thompson
Sara Ting
Griselda Tomaino
Joseph Tonkonogy
Juli Shea Towell
Howard Trachtman
Mary Tracy
Susan Tracy
Shauna Trahan
Shirley Traite
Deanna Traweck
Joseph Treff
Erica Tritta
Carol Trust
John and Judy Tully
Alice Tuomivaara
Nancy Turnbull
Jayne Tyrell
Lisa Uyehara

Rick Valachovic
Margot Valdivia
Joseph Vallely
Carolyn Van Der Laan
Karen Vanderborgh
John VanScoyoc
Howard Vatcher
Phil and Kate Villers
Dian Vittori
Harry Voorhees
Dr. Alexander Vuckovic
Dixie Wade
Greg and Emily Wagner
Johanna Walczyk
Beth Wald
Amy Wales
Leslie Walker
Jane Wall
Allan and Kathe Wallis
Adam Walsh
Barbara Freedman and Mitchell Wand

Calvin Wang
Jeouhwa Wang
Elizabeth Ward
Thomas Ward
Dr. Rebecca Warner
Wendy Warring
Stephen and Suzanne Washburn
Bruce Waslick
Sue Watson
Wayland High School
Alan and Elaine Weiler
Kathy Weinman
Mary Weis
Janet Weisenberger
Rosalie Weiss
Dr. Charles Welch
Josiah Welch
Chris Weld
Michelle Wells
Marcia Werchol
Phillip Werth
Ed West

Karen West
John Westbrook
Brenda Wettergreen
Sylvia Wewiora
Andrea Wexler
Donald Wexler
Christine Wey
Barbara Whitcomb
Carolyn White
Catherine White
David White
Henry White
Anne Whitman
Megan Wiechnik
Jenny Wilder
Wells Wilkinson
Lefferts, William
William Lefferts
John Taylor
Williams
Eliza Williamson
Nicole Williamson
James and Barbara Willis
Alice Wolpert
Lois Woodbury

Mike and Cindy Woods
Worcester Academy Girls Hockey
Susan and Peter Workum
Nancy Wrenn
Peter and Patricia Wright
Theresa Wright
Susan Wurzel
Bernice and Eliot Wyzanski
Hou, Xing Chun
Xing Chun Hou
Judith Yabroff
Henry Yeh
Anton and Joanne Yereniuk
Kovalko, Yolanta
Yolanta Kovalko
Sam Younes
Kenneth Young
Wayne Ysaguirre
Judith Zacek



Rorry Zahoure
Gary Zalkin
Shari Zalkind
Mark and Virginia Zanger
Holly Zeeb
Veronica Zhang
Marcia Zuckerman
Judi Ross Zuke

* Individual Donors
for the 2016 Fiscal
Year

Financial Results for FY 2015*

Unrestricted Net Assets Revenue & Support

Grant Income	\$484,010
Special Event - NAMIWalks	661,462
Special Event - Other	80,035
Contributions	299,689
Membership and Convention	32,477
Interest Income	4,053
Net Assets Released from Restrictions Used for Operations	139,030

Total Revenue and Support **\$ 1,700,756**

*unaudited

Operating Expenses

Salaries and Benefits	761,096
Professional Fees	283,379
Occupancy Costs	87,021
Direct Program Expenses	104,712
G&A and Fundraising Expenses	209,604
Walk Payments to NAMI National and Affiliates	163,064

Total Operating Expenses **\$ 1,608,876**

Income from Operations	91,880
Unrealized Loss on Investments	(13,343)
Realized Gain on Investments	2,869

Increase in Unrestricted Net Assets **\$81,406**

Total Operating Expenses	1,608,876
Income from Operations	91,880
Realized Gain on Investments	2,869
Excess of Revenue and Gain Over Expenses	94,749
Unrealized Loss on Investments	(13,343)
Increase in Unrestricted Net Assets	\$ 81,406

Functional Expenses FY 2015

GENERAL & ADMINISTRATIVE • 6.55%
FUND RAISING • 7.94%
PROGRAM COSTS • 85.5%





Crowd at Canary Square Restaurant listening to Dr. David Satcher's remarks

5TH Annual Spring Fundraiser on Sunday, April 3, 2016

NAMI Massachusetts Affiliates

AFFILIATE | PRESIDENT

Berkshire County* |

Deborah Sadowy

Boston | Ewa Pytowska

Bristol County |

Brenda Venice

Cambridge/Middlesex |

Jane Martin

Cape Ann* | George Howe

Cape Cod & The Islands* |

Jackie Lane

Central Massachusetts | Jack Casey

Central Middlesex* | Jennie Payne

Dorchester/Mattapan/Roxbury | Roy J. Lynch

Greater Boston CAN | Ewa Pytowska

Greater Lowell | Dick Edgar

Greater North Shore | Melinda Mathews

Latino Metro Boston | Marcos Rosenbaum

MetroWest* | Lawrence DeAngelo

Newton/Wellesley | Sid Gelb

North Central | Guy Beales

Northeast Essex | Bernard Gallant

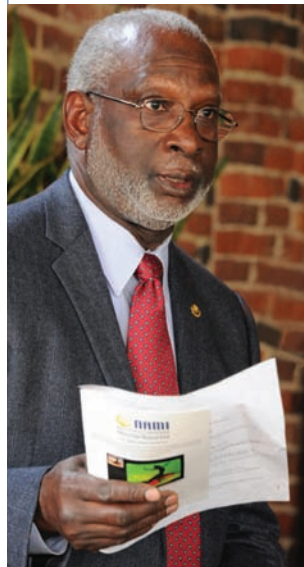
Plymouth | Jean Childers

South Norfolk | Ray Breton

South Shore | Betty MacIntyre

Western Mass* | Bernice Drumheller

*MEETS
NAMI
AFFILIATE
STANDARDS OF
EXCELLENCE



Dr. David Satcher

Our 5th Annual Spring Fundraiser on Sunday, April 3, 2016 with former U.S. Surgeon General Dr. David Satcher featured another huge crowd at Canary Square restaurant in Jamaica Plain, MA.

In December 1999, Dr. Satcher broke new ground when he released the first ever Surgeon General's report on mental health. In **Mental Health: A Report of the Surgeon General**, Dr. Satcher highlighted the importance of increased attention to the mental health concerns that face our country. He also confirmed what NAMI Mass stakeholders know to be true: that with access to care, the help of family and the realization of health care parity, recovery is both real and possible. The event raised over \$80,000.

The people of this country desperately need to engage in an open and honest debate about mental health. ...We're talking about creating an environment of support and caring where a person not only feels comfortable coming forward, but would be encouraged to come forward... > Dr. David Satcher



Massachusetts

The Schrafft Center
529 Main Street, Suite 1M17
Boston, MA 02129
(617)-580-8541
namimass.org

